

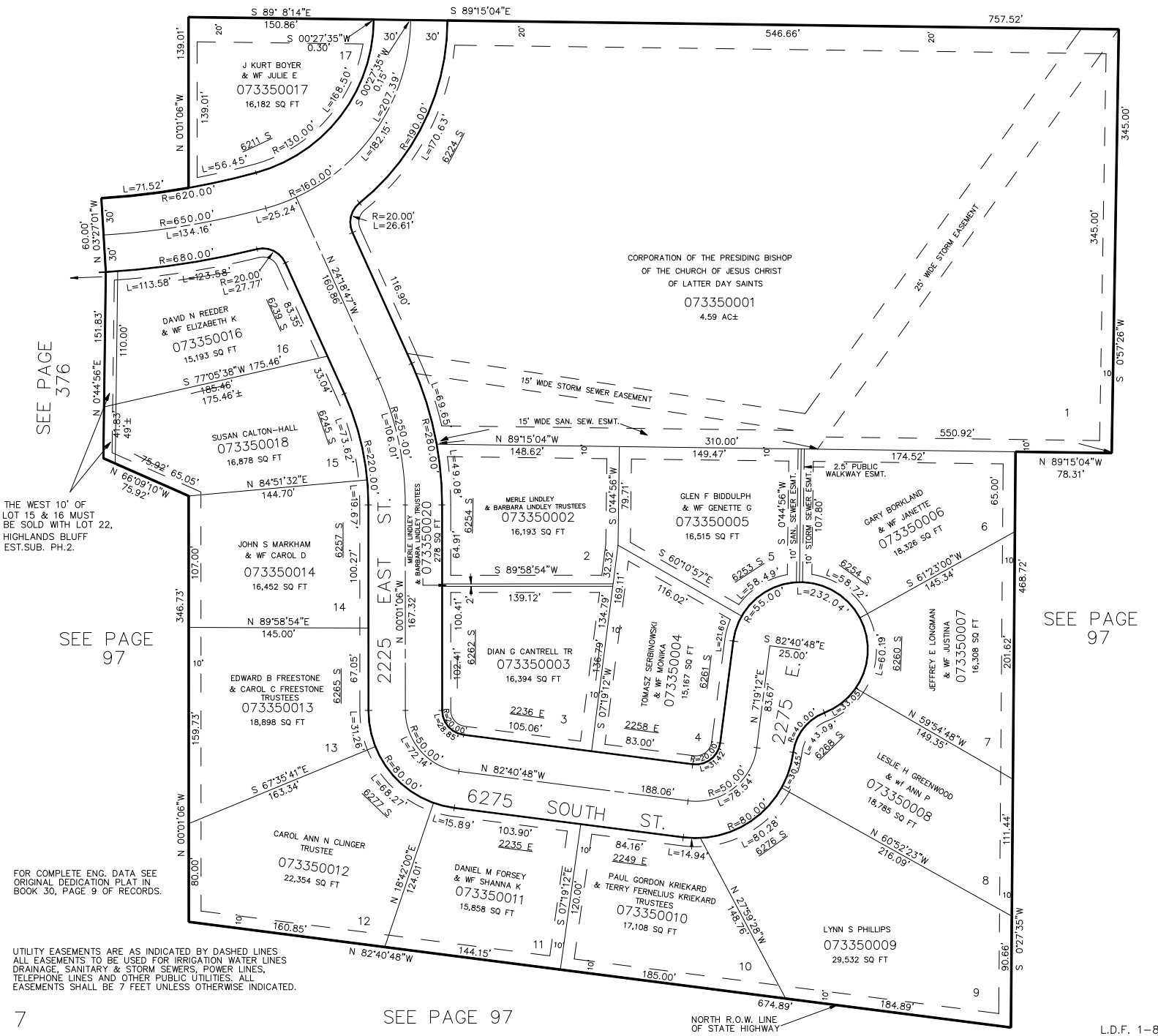
PART OF THE S.W. 1/4 OF SEC. 23, T.5N., R.1W., S.L.B. & M. 335
HIGHLANDS BLUFF ESTATES SUBDIVISION – PHASE 1

IN WEBER COUNTY

TAXING UNIT: 159

SCALE 1"=60'

SEE PAGE 152



THE WEST 10' OF LOT 15 & 16 MUST BE SOLD WITH LOT 22, HIGHLANDS BLUFF EST.SUB. PH.2.

FOR COMPLETE ENG. DATA SEE ORIGINAL DEDICATION PLAT IN BOOK 30, PAGE 9 OF RECORDS.

UTILITY EASEMENTS ARE AS INDICATED BY DASHED LINES. ALL EASEMENTS TO BE USED FOR IRRIGATION WATER LINES, DRAINAGE, SANITARY & STORM SEWERS, POWER LINES, TELEPHONE LINES AND OTHER PUBLIC UTILITIES. ALL EASEMENTS SHALL BE 7 FEET UNLESS OTHERWISE INDICATED.